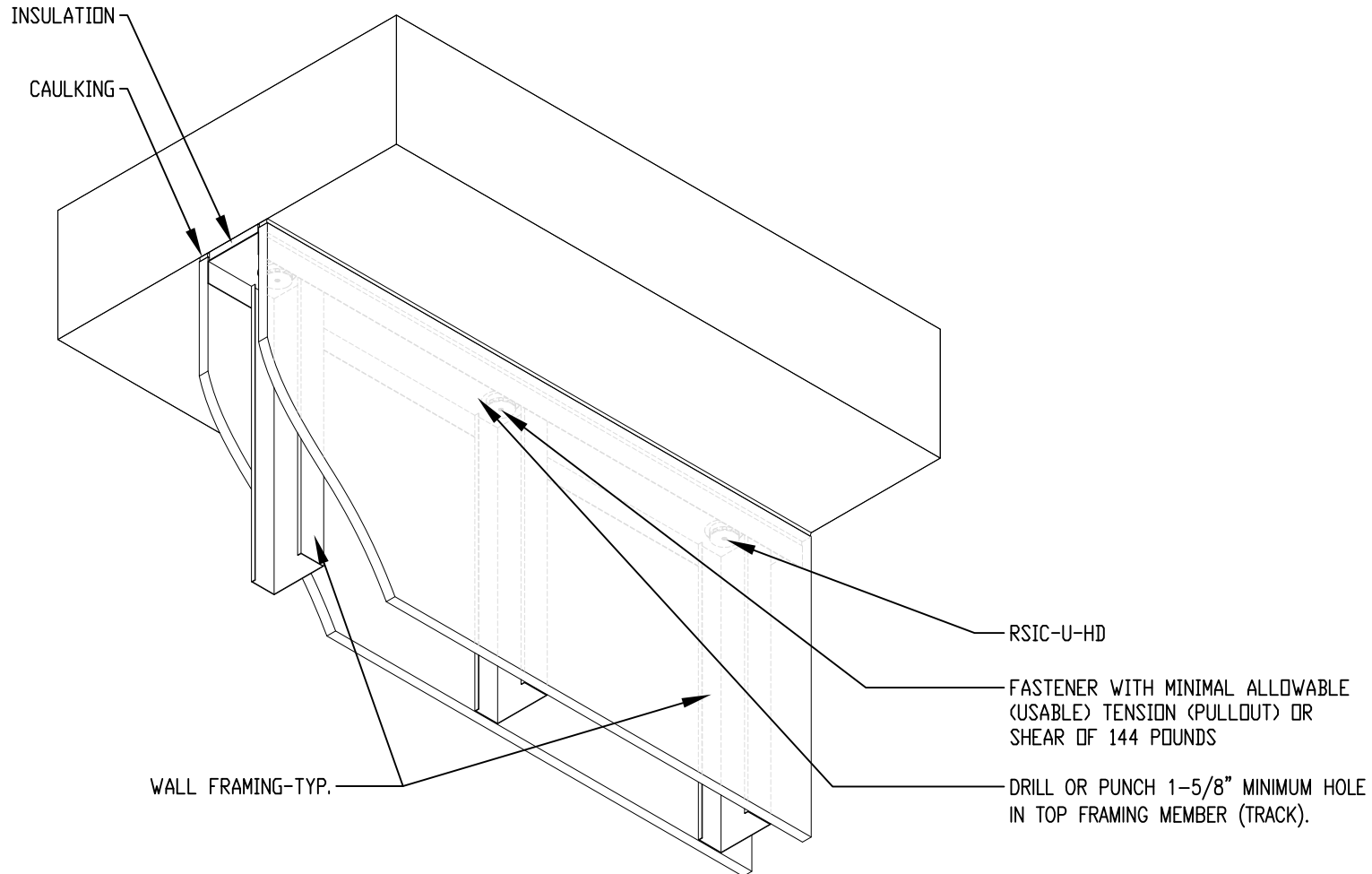


RSIC-U-HD

HEAD OF WALL



GENERAL NOTES:

1. RSIC-U-HD TO BE SECURED TO THE OVERHEAD STRUCTURE WITH METAL FASTENERS DESIGNED AND TESTED FOR AN OVERHEAD INSTALLATION WITH ONE HUNDRED FORTY FOUR (144) POUND MINIMUM ALLOWABLE LOAD PER FASTENER.
2. RSIC-U-HD TO BE MECHANICALLY FASTENED TO THE STEEL TOP TRACK WITH FOUR (4) FRAMING SCREWS. THE FRAMING SCREW HEADS TO BE ON THE TOP SIDE OF THE RSIC-U-HD MOUNTING PLATE.
3. ALL VOIDS BETWEEN THE TOP FRAMING MEMBER (TRACK) AND THE OVERHEAD STRUCTURE ARE TO BE FILLED WITH ROCK WOOL INSULATION AND SEALED AIR TIGHT WITH NON-HARDENING ACOUSTICAL CAULKING
4. FOR ONE OR TWO HOUR FIRE RESISTIVE INSTALLATIONS REFER TO THE UL FIRE RESISTIVE DESIGN ASSEMBLY HEAD OF WALL FOR MORE SPECIFIC INSTALLATION DETAILS.