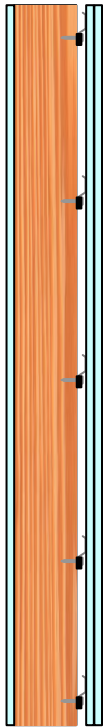


# PAC INTERNATIONAL, LLC.

## RC-1 BOOST SOUND ISOLATION CLIP

### RC-1 Boost

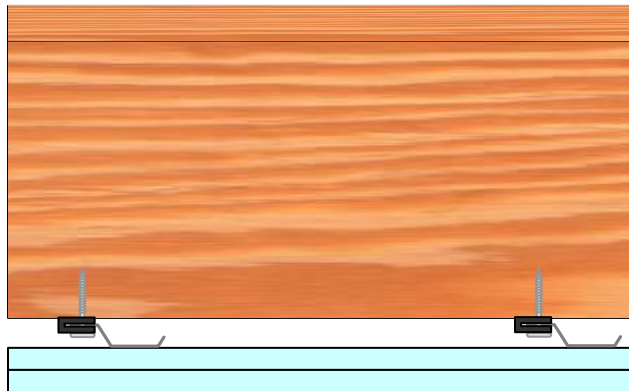


RC-1 Boost with  
RC-1 Boost screw

The **RC-1 Boost** is designed for use with any wood or steel application where noise control is required. This includes, wood framed or steel framed wall and ceiling systems. The RC-1 Boost product decouples the gypsum board from the structure, giving the assembly enhanced acoustical performance. With an Acoustical design load rating of 18 lbs per isolator, the RC-1 Boost clip can support up to two layers of 5/8" gypsum board when spaced no more that 16" x 24" oc. Final spacing [of the RC-Boost isolators is determined by the UL Fire Resistive Design specifications. The RC-1 Boost clip Wraps around the screw edge of standard RC channel. The RC-1 Boost is screwed to the framing using the PAC International supplied RC-1 Boost Screw. No substitutions allowed. The RC-Boost decouples the gypsum board from the structure stopping STC and IIC vibrations from entering the space adjacent.

RC-1 Boost screw specifically designed to enhance the acoustical performance of the RC-1 Boost isolator. No substitutions allowed.

### **RC-1 Boost, A Low Cost, High Performance, Noise control Solution**

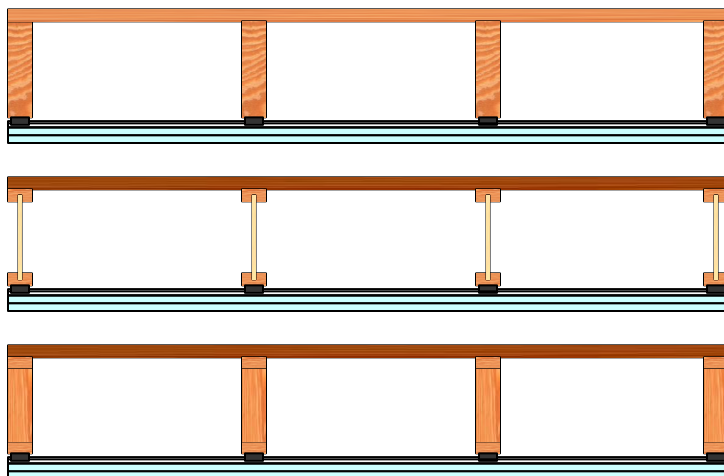


Wood
Apartment
Commercial
Conference Rooms

Condo
Recording Studio
Home Theater
Commercial theater

#### RC-1 Boost specifications:

Acoustical design load:	Up to 18 Lbs
Total deflection	2 mm
Double deflection	Yes (1 mm)
Low VOC	Yes
Adjustable	No
Cavity min	3/4"
Cavity Max	3/4"
Adjustment limit	N/A
Use on Ceilings	Yes
Use on walls	Yes
New Construction	Yes
Retro Fit	Yes



# RC-1 Boost ACOUSTIC ASSEMBLY

FLOOR CEILING ASSEMBLY

DIRECT FIX TO SOLID WOOD JOIST

# PAC International

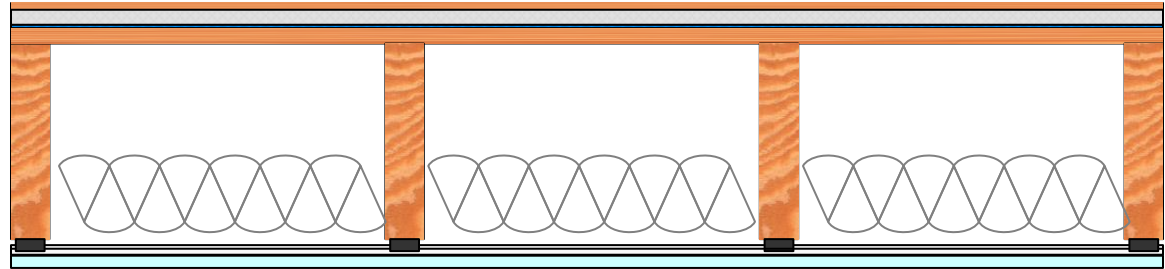
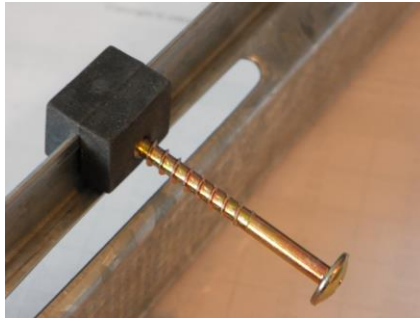
World Leader in Noise Control Solutions



FC RC-1 BOOST NGC 7013168

Toll Free (866) 774-2100

[WWW.PAC-INTL.COM](http://WWW.PAC-INTL.COM)



## CONSTRUCTION

- WOOD LAMINATE FLOORING
- 1/2" WOOD UNDERLAYMENT
- 1" HACKER FIRM-FILL GYPCRETE
- 1 LAYER HACKER SCM-250 UNDERLAYMENT
- 5/8" T&G PLYWOOD SUBFLOOR
- 2" X 10" SOLID WOOD JOIST @ 16" OC
- R-11 FIBERGLASS BATT INSULATION (NOM 6")
- RC-1 BOOST INSTALLED @ 16" x 24" OC
- RC-CHANNEL @ 24" OC
- 1 LAYER 5/8" PABCO FLAME CURB TYPE "C" WALLBOARD

NGC-7013168/NGC-5013114

STC 58	IIC 50