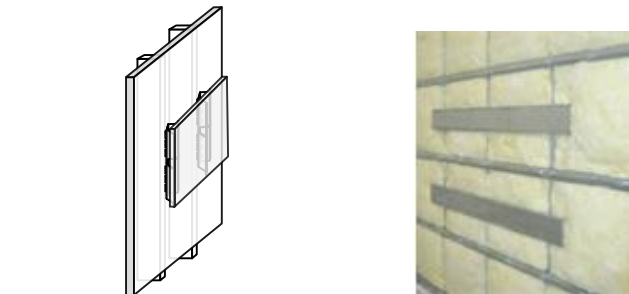
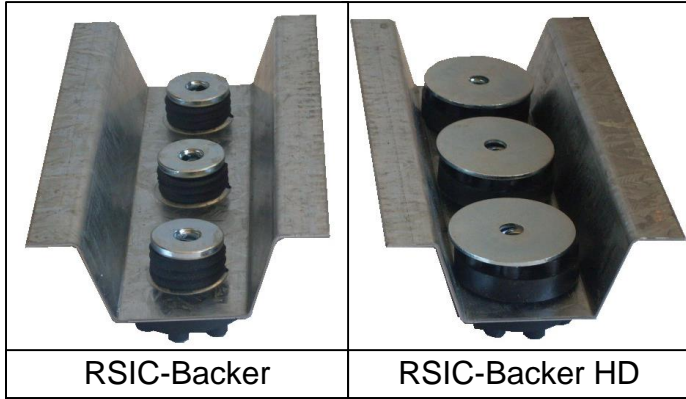




RSIC-Backer RSIC-Backer HD

The RSIC-Backer series is a heavy duty mount used together with the RSIC-1 clips, creating the only complete noise isolation system that can support heavy items. The RSIC-Backer can be used in new construction or retrofit. The RSIC-Backer should be used when items need to be acoustically decoupled for noise and vibration isolation.

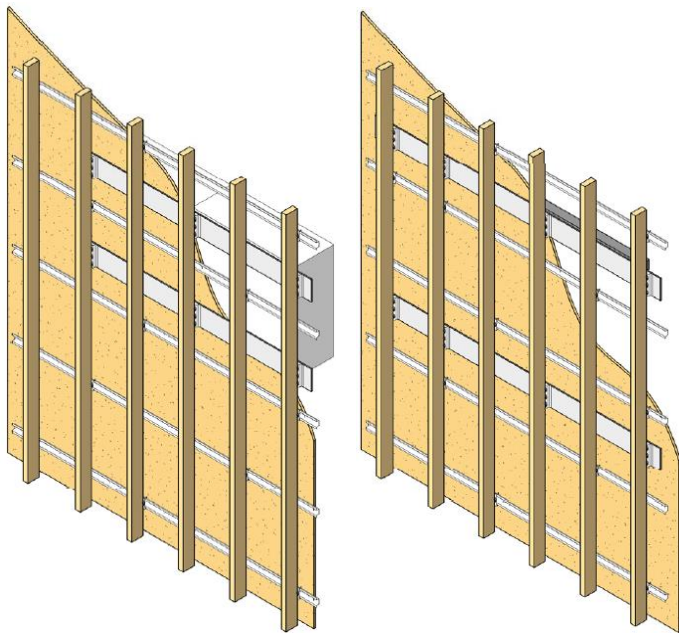
A few examples of the possible uses for the RSIC-Backer series of noise control clips: Cabinet Support, Chalk boards, Projector screens, Handicap grab bars, Lockers, TV wall mount support, Handrails.



Wood
Steel
Metal deck
Apartment
Retail
Conference Rooms

Concrete
Condo
Commercial
Recording Studio
Home Theater
Commercial theater

RSIC-Backer specifications:	
Acoustical design load: STD	108 Lbs
Acoustical design load: HD	216 Lbs
Total deflection	3 mm
Double deflection	Yes (1.5 mm)
Made with Recycled content	Yes
Low VOC treated	Yes
Adjustable	No
Cavity min	1-5/8"
Cavity Max	1-5/8"
Adjustment limit	N/A
Use on Ceilings	Yes
Use on walls	Yes
New Construction	Yes
Retro Fit	Yes



**RSIC is the Low Cost, High Performance,
Noise control Solution**