

RSIC-1 ACOUSTIC ASSEMBLY

WALL ASSEMBLY

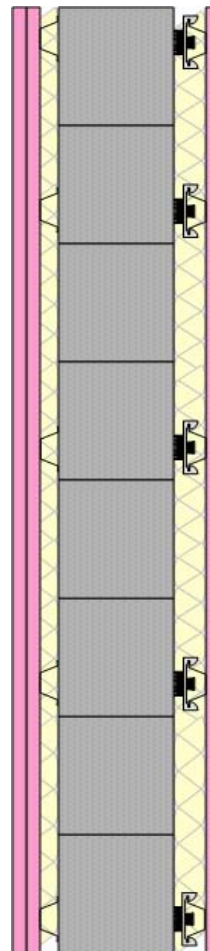


DIRECT FIX TO 4" AAC BLOCK

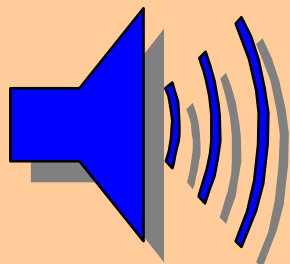
AAC- 4" RAL STC 60

CONSTRUCTION

- * 2 layers 5/8" gypsum board
- * 25 Ga. DFC at 24" oc.
- * 1" batt insulation (R-4)
- * 4" AAC block
- * RSIC-1 clips at 24" x 48" oc.
- * 25 Ga. DFC 24" oc.
- * 2" batt insulation (R-8)
- * 1 Layer 5/8" gypsum board



RAL TL05-091



STC 60

4 HOUR



UL Design U919