

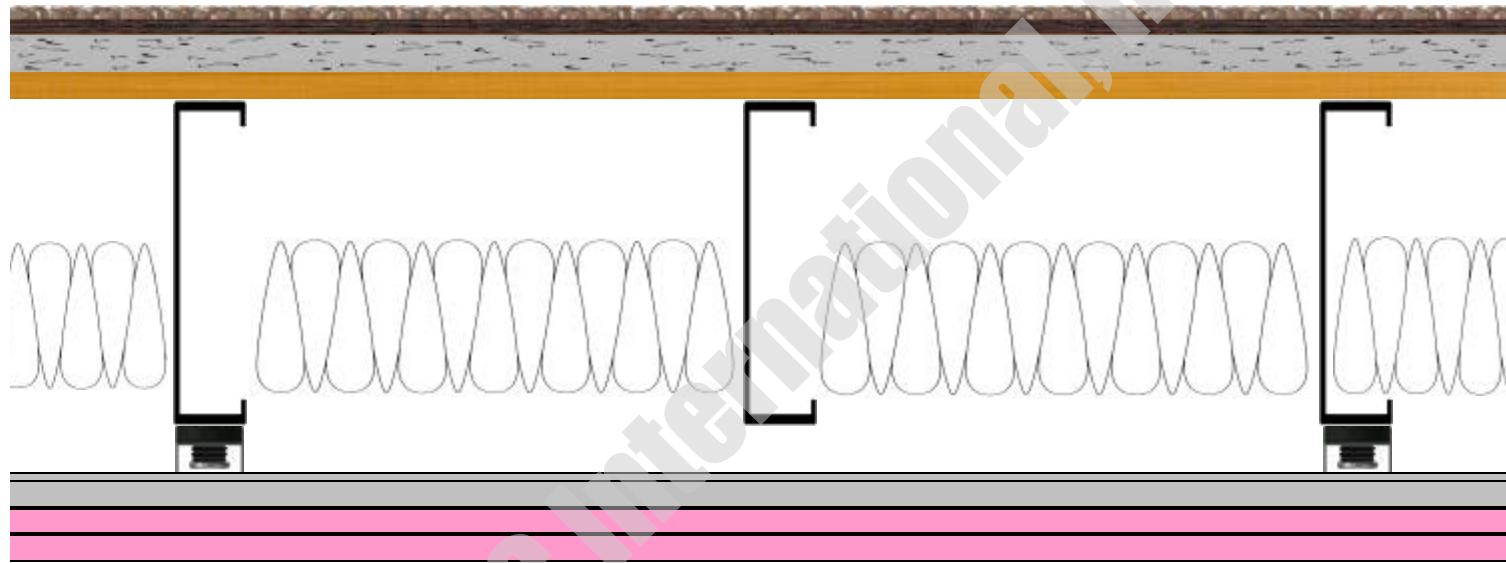
RSIC-1 Acoustic Assembly

FLOOR / CEILING SYSTEMS

DIRECT FIX CEILING UNDER STEEL JOIST



FCS 14-MLG Steel Joist



Construction

- * 40 oz. Carpet
- * 44 oz. Carpet pad.
- * 1 1/2" Light weight gypsum concrete.
- * 1 1/8" T&G plywood sub floor.
- * Steel joist 1200-S-162-68.
- * 6" fiberglass insulation between joists.
- * RSIC-1 acoustic assembly screwed to joists at 4' 0"oc.
- * 7/8" furring channels at 2' 0"oc.
- * 2 x 5/8" fire rated gypsum wallboard sheets taped and set.



SOUND TRANSMISSION CLASS	IMPACT ISOLATION CLASS
STC 60	IIC 82