

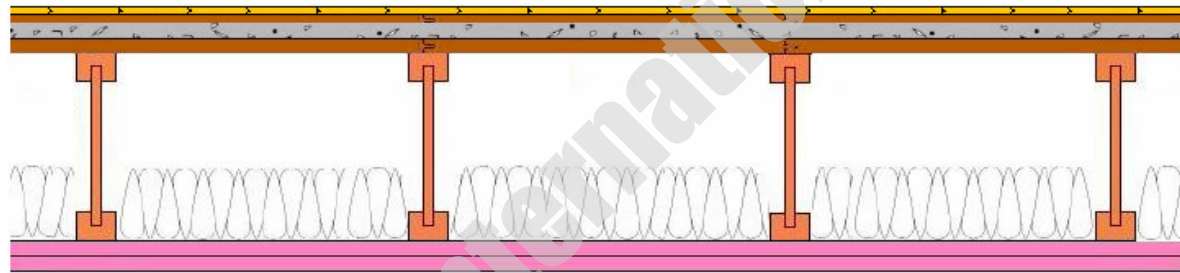
DIRECT CONNECT ACOUSTIC ASSEMBLY



FLOOR/CEILING ASSEMBLY
DIRECT FIX TO TJI



DSA TJI no resilient FSTC 40 FIIC 32





CONSTRUCTION

- * Hardwood Flooring
- * 1/2" Plywood
- * 1-1/2" Light Weight Gypsum Concrete
- * 3/4" Plywood
- * 16" TJI joist
- * 3.5" Fibergalss Batt Insulation
- * 2 layers 5/8" Gypsum Direct Attached

Test report: DSA 187003-2

Test report: DSA 187003-1

	 Fire resistance ratings ANS/UL L518, L542
FIELD SOUND TRANSMISSION CLASS	FIELD IMPACT ISOLATION CLASS
FSTC 40	FIIC 32

[CLICK HERE for Full Test Report](#)