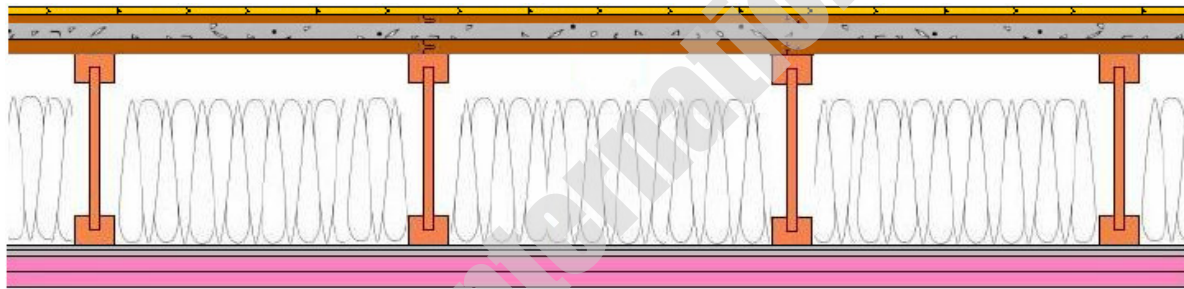


# RC CHANNEL ACOUSTIC ASSEMBLY



## FLOOR/CEILING ASSEMBLY DIRECT FIX TO TJI

DSA TJI rc channel FSTC 53 FIIC 44



### CONSTRUCTION

- \* Hardwood Flooring
- \* 1/2" Plywood
- \* 1-1/2" Light Weight Gypsum Concrete
- \* 3/4" Plywood
- \* 16" TJI joist
- \* 13.5" Fibergalss Batt Insulation
- \* Rc Channel
- \* 2 layers 5/8" Gypsum Direct Attached

Test report: DSA 720041-IIC2-NNR2



**FIELD SOUND  
TRANSMISSION  
CLASS**

**FSTC 53**



**Fire resistance ratings  
ANS/UL  
L518, L542**

**FIELD IMPACT  
ISOLATION  
CLASS**

**FIIC 44**

[CLICK HERE for Full Test Report](#)