

# RSIC-1 ACOUSTIC ASSEMBLY

## WALL ASSEMBLY



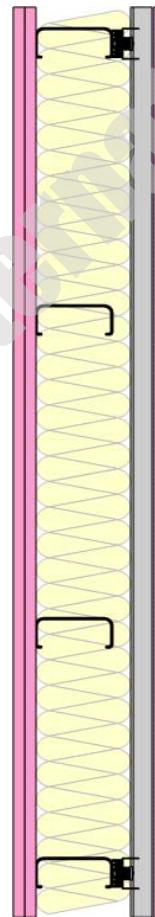
Toll Free 866-774-2100 • Telephone 503-649-7700

### DIRECT FIX TO STEEL STUD

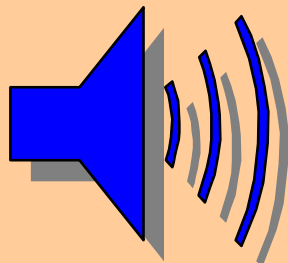
**WS 2.5SS STC 60**

#### CONSTRUCTION

- \* 2 layers 5/8" Gypsum Board
- \* 2.5" Steel Stud at 16" oc
- \* R-11 Insulation 3.5"
- \* RSIC-1 48" oc.
- \* Drywall Furring Channel at 24" oc
- \* 1 layer 5/8" Gypsum Board



**Insul 5.5**



**STC 60**

**1 hour fire rating**



**UL U451, U419**