

RSIC-1 ACOUSTIC ASSEMBLY

WALL ASSEMBLY



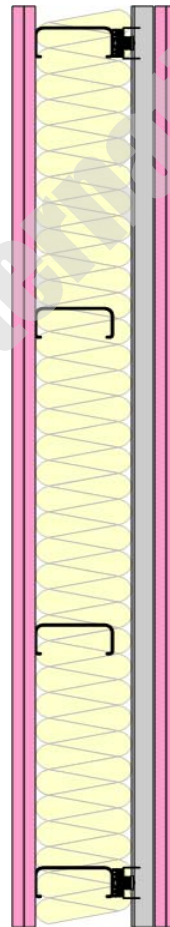
Toll Free 866-774-2100 • Telephone 503-649-7700

DIRECT FIX TO STEEL STUD

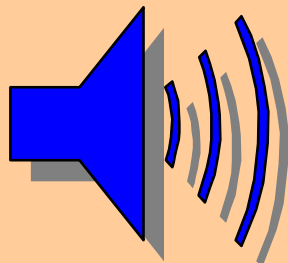
WS 2.5SS STC 62

CONSTRUCTION

- * 2 layers 5/8" Gypsum Board
- * 2.5" Steel Stud at 16" oc
- * R-11 Insulation 3.5"
- * RSIC-1 48" oc.
- * Drywall Furring Channel at 24" oc
- * 2 layers 5/8" Gypsum Board



Insul 5.5



STC 62

1 and 2 hour fire rating



UL U454