

# RSIC ACOUSTIC ASSEMBLY

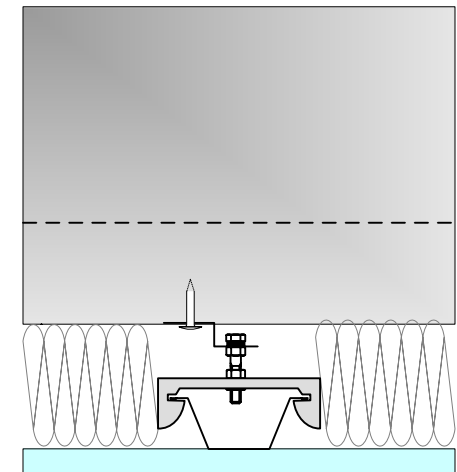
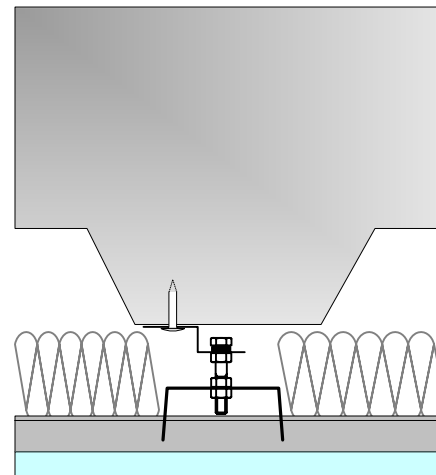
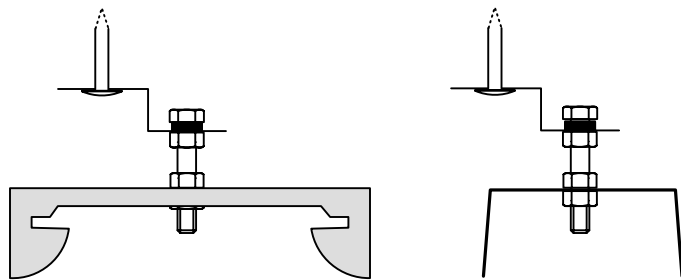
## NOISE CONTROL

## FLOOR CEILING ASSEMBLY



### DIRECT FIX TO CONCRETE OVER METAL DECK

#### RSIC-V Shoot-In Adjustable Direct Concrete Mount

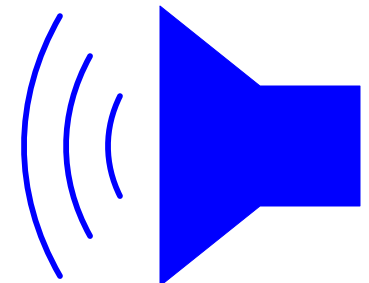


#### CONSTRUCTION

- 1-1/2"~10" CONCRETE OVER METAL DECK
- ITW RAMSET 14TRHMP034 (1/4" THREAD)
- 1/4" x 20 FULL THREAD BOLT
- (VARYING BOLT LENGTH CHANGES DROPPED CEILING HEIGHT 2-1/4" to 10")
- RSIC-V CLIPS AT 24" X 48" OC.
- DRYWALL FURRING CHANNEL AT 24" OC.
- INSULATION (FILL CAVITY)
- 1 LAYER 5/8" FIRE-CODE GYP



**NON COMBUSTIBLE**



**EST IIC 50 STC 65**