

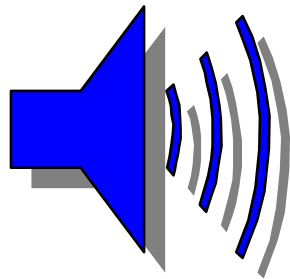
RSIC-1 ACOUSTIC ASSEMBLY

WALL ASSEMBLY

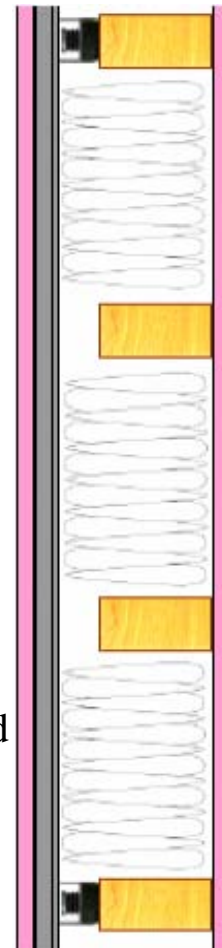


DIRECT FIX TO WOOD STUD

RAL 208 Assembly 1 STC 56



STC 56



CONSTRUCTION

- * 5/8" Gypsum
- * 7/8" x 25 gauge furring Channel @ 24" o.c.
- * RSIC-1 clips at 48" o.c.
- * 2x4 wood studs @ 16" o.c.
- * 6" unfaced fiberglass insulation cavity fully filled
- * 5/8" Gypsum

- * Test Number TL01-208 RAL
- * UL U301, U305, U309, U311, U331, U334



UL U301, U305, U309
U311, U331, U334

**SOUND
TRANSMISSION
CLASS**

STC 56

RIVERBANK ACOUSTICAL LABORATORIES

1512 S. BATAVIA AVENUE
GENEVA, ILLINOIS 60134

OF
IIT RESEARCH INSTITUTE

630/232-0104

FOUNDED 1918 BY
WALLACE CLEMENT SABINE

REPORT

FOR: PAC International, Inc.

Sound Transmission Loss Test

RAL™-TL01-208

ON: Resilient Sound Isolation Clip (RSIC-1) on
2 x 4 Timber Framing 16 Inches On Center
With Single Layer 5/8 Inch Gypsum Board Each Side

Page 1 of 4

CONDUCTED: 13 August 2001

REVISION: 3 April 2002

TEST METHOD

Unless otherwise designated, the measurements reported below were made with all facilities and procedures in explicit conformity with the ASTM Designations E90-99 and E413-87, as well as other pertinent standards. Riverbank Acoustical Laboratories has been accredited by the U.S. Department of Commerce, National Institute of Standards and Technology (NIST) under the National Voluntary Laboratory Accreditation Program (NVLAP) for this test procedure. A description of the measuring technique is available separately.

DESCRIPTION OF THE SPECIMEN

The test specimen was designated by the client as Resilient Sound Isolation Clip (RSIC-1) on 2 x 4 timber framing 16 inches on center with single layer 5/8 inch gypsum board each side. The overall dimensions of the specimen as measured were 4.27 m (168 in.) wide by 2.74 m (108 in.) high and 162 mm (6.375 in.) thick. The specimen was installed directly into the laboratory's 2.74 m (9 ft) by 4.27 m (14 ft) wood-lined steel frame and was sealed on the periphery (both sides) with a dense mastic. The description of the specimen was as follows: The test specimen consisted of a two-by-four wood stud wall assembly with 159 mm (6.25 in.) thick R-19 fiberglass and a single layer of 16 mm (0.625 in.) Type X gypsum board on the source side. RSIC-1 clips and hat track were used on the receive side with a single layer of 16 mm (0.625 in.) Type X gypsum board. A more complete description follows.

Floor and Ceiling Plates: The two 89 mm (3.5 in.) wide by 38 mm (1.5 in.) thick and 4.27 m (168 in.) long SPF wood plates were attached to the top and bottom of the test frame with 16d nails on 610 mm (24 in.) centers.

Studs: The twelve 89 mm (3.5 in.) wide by 38 mm (1.5 in.) thick and 2.67 m (105 in.) long SPF wood studs and runners were spaced on 406 mm (16 in.) centers. The studs were attached to the frame with 8d nails.

THE RESULTS REPORTED ABOVE APPLY ONLY TO THE SPECIFIC SAMPLE SUBMITTED FOR MEASUREMENT. NO RESPONSIBILITY IS ASSUMED FOR PERFORMANCE OF ANY OTHER SPECIMEN.



ACCREDITED BY DEPARTMENT OF COMMERCE, NATIONAL VOLUNTARY LABORATORY
ACCREDITATION PROGRAM FOR SELECTED TEST METHODS FOR ACOUSTICS.
THE LABORATORY'S ACCREDITATION OR ANY OF ITS TEST REPORTS IN NO WAY CONSTITUTES
OR IMPLIES PRODUCT CERTIFICATION, APPROVAL, OR ENDORSEMENT BY NIST.

RIVERBANK ACOUSTICAL LABORATORIES

1512 S. BATAVIA AVENUE
GENEVA, ILLINOIS 60134

OF
IIT RESEARCH INSTITUTE

630/232-0104

FOUNDED 1918 BY
WALLACE CLEMENT SABINE

REPORT

PAC International, Inc.

RAL™-TL01-208

13 August 2001

Page 2 of 4

REVISION: 3 April 2002

Insulation: The cavities formed by the studs were friction fit with R-19 unfaced fiberglass insulation batts measuring 159 mm (6.25 in.) thick and 387 mm (15.25 in.) wide.

Perimeter Caulking: Acoustical sealant was applied to test frame perimeter prior to installation of the face layer of gypsum board.

RSIC-1 Clips and Hat Track: On the receive side of the wall, PAC International RSIC-1 clips were attached to studs on 610 mm (24 in.) centers vertically and on 1.22 m (48 in.) centers horizontally. The bottom row of clips was installed 76 mm (3 in.) from the bottom of the test frame. Clips in subsequent rows were staggered 406 mm (16 in.) vertically from adjacent rows. All RISC-1 clips were attached to studs with a single #8, 64 mm (2.5 in.) long coarse thread drywall screw. A total of thirty clips were used. The hat track was 25 gauge roll-formed furring channel which measured 22 mm (0.875 in.) deep by 65 mm (2.56 in.) wide. Six rows of track were mounted to the RSIC clips and were overlapped 152 mm (6 in.) and double wire tied with 18 gauge tie wire as necessary.

Gypsum Wallboard: A single layer of 16 mm (0.625 in.) Type X gypsum board was applied vertically to the studs on the source side of the wall. They were attached to the studs with 32 mm (1.25 in.) Type W bugle head drywall screws on 305 mm (12 in.) centers. A single layer of 16 mm (0.625 in.) Type X gypsum board was applied horizontally to the hat track on the receive side of the wall. They were attached to the track with 25 mm (1 in.) Type S bugle head drywall screws on 305 mm (12 in.) centers. All joints were taped.

The total weight of the specimen as measured was 364.4 kg (803.3 lbs.), an average of 31.2 kg/m² (6.4 lbs/ft²). The transmission area used in the calculations was 11.7 m² (126 ft²). The source room temperature at the time of the test was 27°C (81±1°F) and 47±4% relative humidity. The receiving room temperature at the time of the test was 26±1°C (78±1°F) and 47±1% relative humidity. The source and receive reverberation room volumes were 177 m³ (6,255 ft³) and 179m³ (6,298 ft³), respectively.

THE RESULTS REPORTED ABOVE APPLY ONLY TO THE SPECIFIC SAMPLE SUBMITTED FOR MEASUREMENT. NO RESPONSIBILITY IS ASSUMED FOR PERFORMANCE OF ANY OTHER SPECIMEN.



ACCREDITED BY DEPARTMENT OF COMMERCE, NATIONAL VOLUNTARY LABORATORY
ACCREDITATION PROGRAM FOR SELECTED TEST METHODS FOR ACOUSTICS.
THE LABORATORY'S ACCREDITATION OR ANY OF ITS TEST REPORTS IN NO WAY CONSTITUTES
OR IMPLIES PRODUCT CERTIFICATION, APPROVAL, OR ENDORSEMENT BY NIST.

RIVERBANK ACOUSTICAL LABORATORIES

1512 S. BATAVIA AVENUE
GENEVA, ILLINOIS 60134

OF
IIT RESEARCH INSTITUTE

630/232-0104

FOUNDED 1918 BY
WALLACE CLEMENT SABINE

REPORT

PAC International, Inc.

RAL™-TL01-208

13 August 2001

Page 3 of 4

REVISION: 3 April 2002

TEST RESULTS

Sound transmission loss values are tabulated at the eighteen standard frequencies. A graphic presentation of the data and additional information appear on the following pages. The precision of the TL test data is within the limits set by the ASTM Standard E90-99.

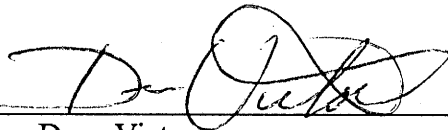
<u>FREQ.</u>	<u>T.L.</u>	<u>C.L.</u>	<u>DEF.</u>	<u>FREQ.</u>	<u>T.L.</u>	<u>C.L.</u>	<u>DEF.</u>
100	29	3.02	0	800	59	0.06	0
125	33	1.14	7	1000	61	0.05	0
160	37	1.25	6	1250	63	0.07	0
200	42	0.53	4	1600	65	0.05	0
250	46	0.39	3	2000	60	0.08	0
315	52	0.17	0	2500	56	0.13	4
400	54	0.04	1	3150	61	0.11	0
500	55	0.14	1	4000	66	0.12	0
630	58	0.12	0	5000	69	0.13	0

STC=56

ABBREVIATION INDEX

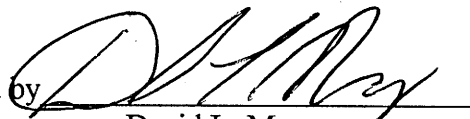
FREQ. = FREQUENCY, HERTZ, (cps)
T.L. = TRANSMISSION LOSS, dB
C.L. = UNCERTAINTY IN dB, FOR A 95% CONFIDENCE LIMIT
DEF. = DEFICIENCIES, dB<STC CONTOUR
STC = SOUND TRANSMISSION CLASS

Tested by


Dean Victor

Senior Experimentalist

Approved by


David L. Moyer

Laboratory Manager

THE RESULTS REPORTED ABOVE APPLY ONLY TO THE SPECIFIC SAMPLE SUBMITTED FOR MEASUREMENT. NO RESPONSIBILITY IS ASSUMED FOR PERFORMANCE OF ANY OTHER SPECIMEN.

NVLAP

ACCREDITED BY DEPARTMENT OF COMMERCE, NATIONAL VOLUNTARY LABORATORY
ACCREDITATION PROGRAM FOR SELECTED TEST METHODS FOR ACOUSTICS.
THE LABORATORY'S ACCREDITATION OR ANY OF ITS TEST REPORTS IN NO WAY CONSTITUTES
OR IMPLIES PRODUCT CERTIFICATION, APPROVAL, OR ENDORSEMENT BY NIST.

RIVERBANK ACOUSTICAL LABORATORIES

1512 S. BATAVIA AVENUE
GENEVA, ILLINOIS 60134

OF
IIT RESEARCH INSTITUTE

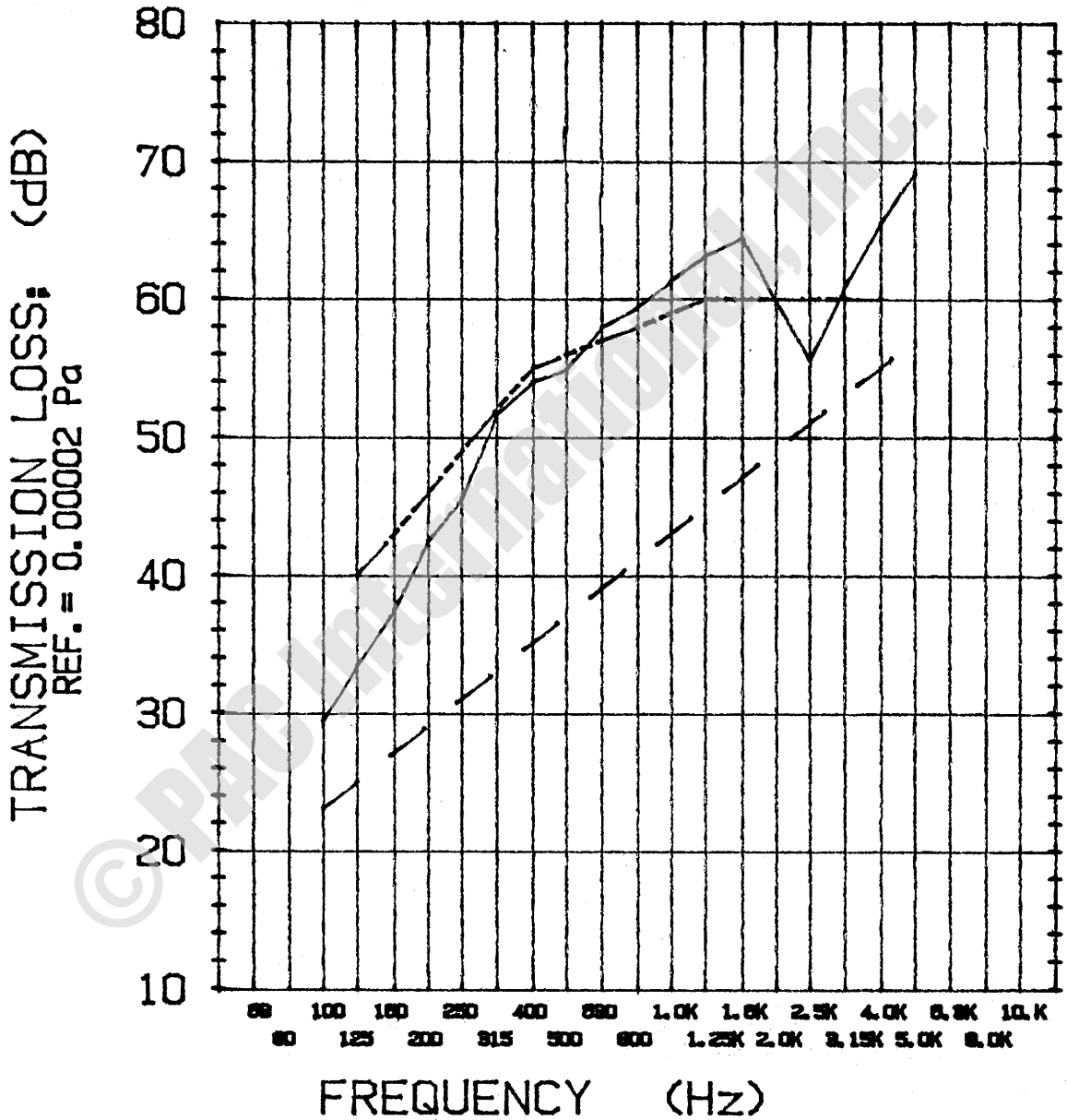
630/232-0104

FOUNDED 1918 BY
WALLACE CLEMENT SABINE

REPORT

TRANSMISSION LOSS REPORT RAL-TL01-208

PAGE 4 OF 4



- TRANSMISSION LOSS
- - - - SOUND TRANSMISSION CLASS CONTOUR
- . - . MASS LAW CONTOUR

THE RESULTS REPORTED ABOVE APPLY ONLY TO THE SPECIFIC SAMPLE SUBMITTED FOR MEASUREMENT. NO RESPONSIBILITY IS ASSUMED FOR PERFORMANCE OF ANY OTHER SPECIMEN.



ACCREDITED BY DEPARTMENT OF COMMERCE, NATIONAL VOLUNTARY LABORATORY
ACCREDITATION PROGRAM FOR SELECTED TEST METHODS FOR ACOUSTICS.
THE LABORATORY'S ACCREDITATION OR ANY OF ITS TEST REPORTS IN NO WAY CONSTITUTES
OR IMPLIES PRODUCT CERTIFICATION, APPROVAL, OR ENDORSEMENT BY NIST.

Riverbank Acoustical
L A B O R A T O R I E S

FOR: PAC International, Inc.

ON: RAL™TL01-208: Resilient Sound Isolation Clip (RSIC-1) on
2 x 4 Timber Framing 16 Inches On Center
With Single Layer 5/8 Inch Gypsum Board Each Side

1512 Batavia Avenue
Geneva, Illinois 60134-3300

phone: 630 . 232 . 0104

fax: 630 . 232 . 0138

CONDUCTED: 13 August 2001

Page 1 of 1

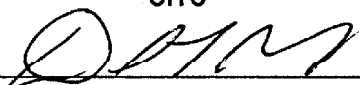
SUBJECT: Outdoor Indoor Transmission Class Determination (OITC)

CLASSIFICATION

Unless otherwise designated, the Outdoor Indoor Transmission Class (OITC) determination as reported below was made with explicit conformity to the procedures described in the ASTM E1332-90 test standard. Test Method ASTM E90 was used to obtain the sound transmission loss data. This rating is based on an average transportation noise source spectrum and an A-weighted sound level reduction, either of which may be inappropriate for some applications.

One-third Octave Band Center Frequency, Hz	Reference Sound Spectrum, dB	Test Specimen Transmission Loss, dB
80	103	21
100	102	29
125	101	33
160	98	37
200	97	42
250	95	46
315	94	52
400	93	54
500	93	55
630	91	58
800	90	59
1000	89	61
1250	89	63
1600	88	65
2000	88	60
2500	87	56
3150	85	61
4000	84	66

OITC= 39

Calculated and Submitted by 
David L. Moyer
Laboratory Manager

Riverbank Acoustical
L A B O R A T O R I E S

1512 Batavia Avenue
Geneva, Illinois 60134-3300

phone: 630 . 232 . 0104
fax: 630 . 232 . 0138

FOR: PAC International, Inc.

ON: Resilient Sound Isolation Clip (RSIC-1) Test Walls #1-4

Page 1 of 1

CONDUCTED: 13-14 August 2001

SUBJECT: Additional Frequency Data for Transmission Loss Testing

As requested by the client, transmission loss (TL) values were calculated at additional test frequencies. Although the measurements were made in accordance with the procedures described in ASTM E90-99, they do not qualify as part of the standard. Since the results are representative of the test environment only, they are unofficial and intended for research and development guidelines rather than for commercial purposes. The transmission loss values at the additional frequencies were as follows:

Sound Transmission Loss (dB)

Reference Test Number	Frequency (Hz)				
	31.5	40	50	63	80
RAL™-TL01-208	19	23	11	10	21
RAL™-TL01-209	16	23	17	16	24
RAL™-TL01-210	15	23	17	18	30
RAL™-TL01-211	16	23	22	28	36
RAL™-TL01-212	14	23	26	32	38

Calculated and Submitted by



David L. Moyer
Laboratory Manager