

RSIC-V CLIP ACOUSTIC ASSEMBLY

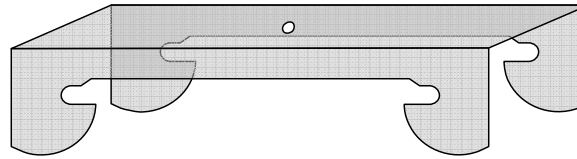
PAC INTERNATIONAL INC.

TOLL FREE 866-RSIC-100

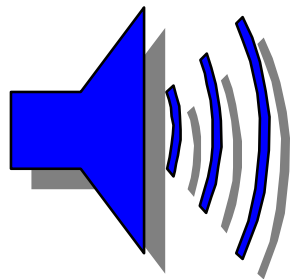
WWW.PAC-INTL.COM

WALL ASSEMBLY

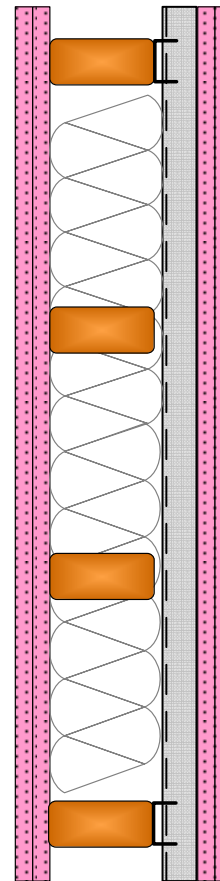
DIRECT FIX TO WOOD STUD



WEAL 06-505 Assembly STC 62



STC 62



CONSTRUCTION

- * 2 Layers 5/8" Gypsum
- * 7/8" x 25 guage furring Channel @ 24" o.c.
- * RSIC-V clips at 48" o.c.
- * 2x4 wood studs @ 16" o.c.
- * 5.5" unfaced fiberglass insulation
- * 2 Layers 5/8" Gypsum
- * Test Number TL06-505
- * UL 1 hour wall assemblies see website for more information



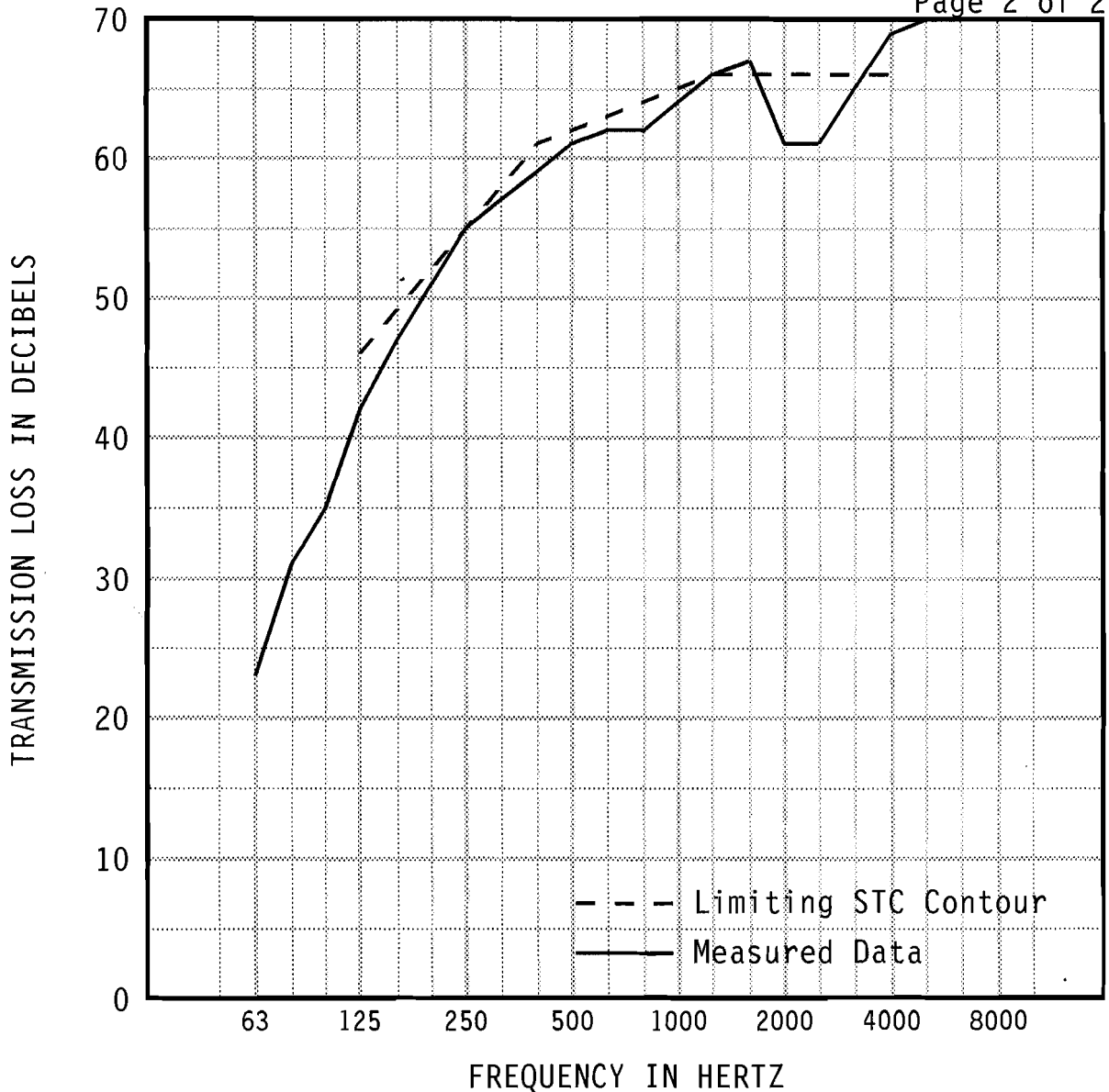
2 HOUR

**SOUND
TRANSMISSION
CLASS**

STC 62

WESTERN ELECTRO-ACOUSTIC LABORATORY

Report No. TL06-505



1/3 OCT BND CNTR	FREQ	63	80	100	125	160	200	250	315	400	500
TL in dB		23	31	35	42	47	*51	*55	*57	*59	*61
95% Confidence in dB deficiencies		1.42	1.92	2.07	1.47	0.89	0.76	0.80	0.52	0.36	0.38
					(4)	(2)	(1)	(0)	(1)	(2)	(1)
1/3 OCT BND CNTR	FREQ	630	800	1000	1250	1600	2000	2500	3150	4000	5000
TL in dB		62	62	64	66	67	61	61	65	69	70
95% Confidence in dB deficiencies		0.29	0.44	0.38	0.39	0.36	0.56	0.55	0.31	0.32	0.50
		(1)	(2)	(1)	(0)		(5)	(5)	(1)		

EWR 63	OITC 47	* Minimum estimate of transmission loss. Measurement limited by filler wall. Actual TL will be equal to or greater than value reported.	STC 62 (26)
Specimen Area: 64 sq.ft. Temperature: 72.5 deg. F Relative Humidity: 49 % Test Date: 14 December 2006			

Report must be distributed in its entirety except with written authorization from Western Electro-Acoustic Laboratory

