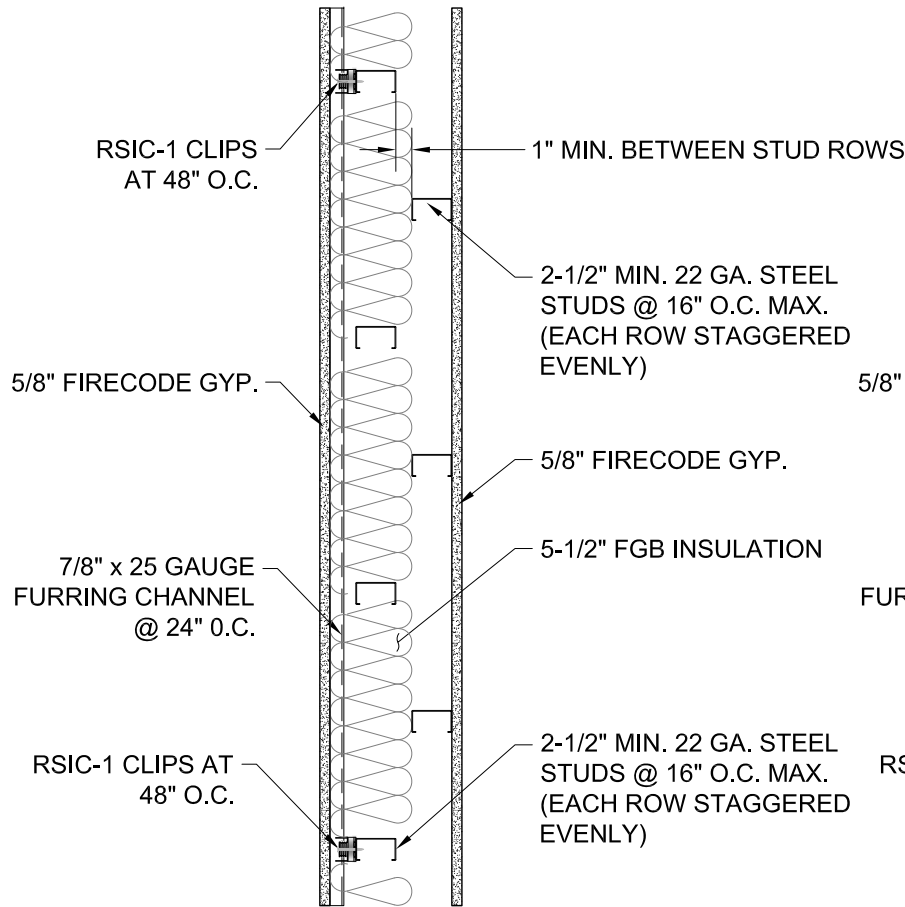


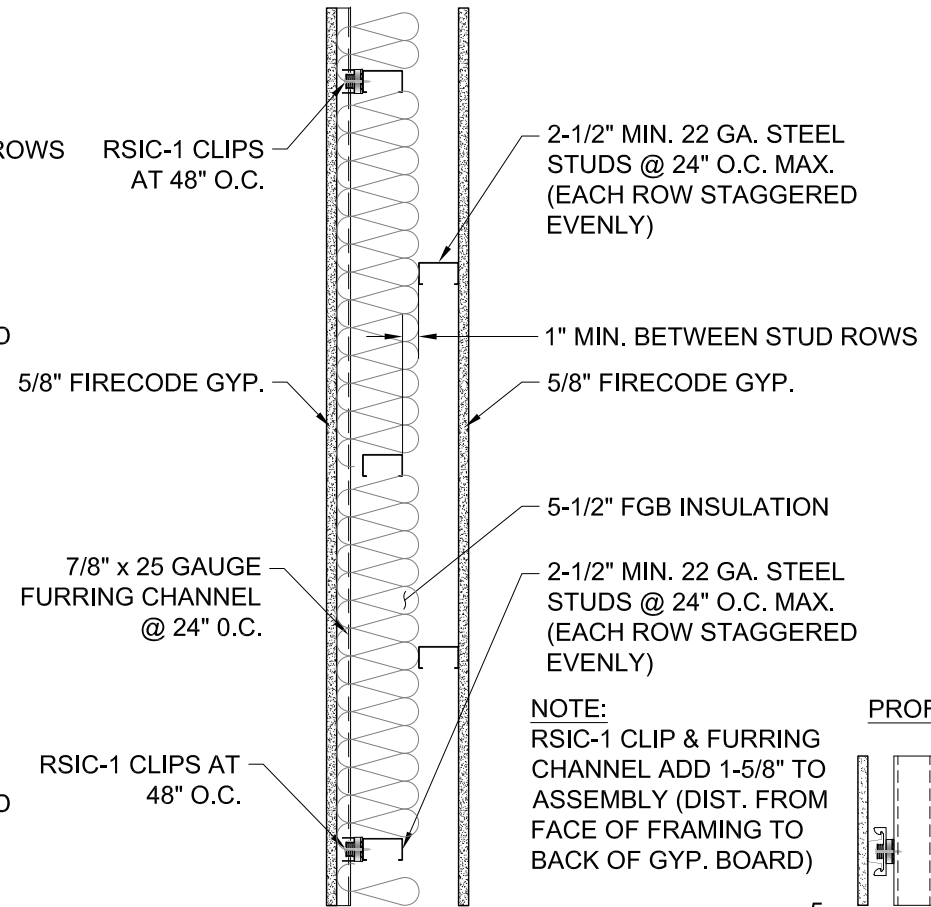
**ONE HOUR - STC 58**



**ONE HOUR CONSTRUCTION**

- 1 LAYER 5/8" FIRECODE GYP.
- 7/8" x 25 GAUGE FURRING CHANNEL @ 24" O.C.
- RSIC-1 CLIPS @ 24" x 48" oc
- 5-1/2" FGB INSULATION
- 2 ROWS OF 2-1/2" MIN. 22 GA. STEEL STUDS @ 16" oc MAX. SPACED EVENLY
- 1 LAYER 5/8" FIRECODE GYP.

**ONE HOUR - STC 58**



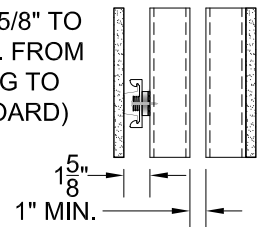
**ONE HOUR CONSTRUCTION**

- 1 LAYER 5/8" FIRECODE GYP.
- 7/8" x 25 GAUGE FURRING CHANNEL @ 24" O.C.
- RSIC-1 CLIPS @ 24" x 48" oc
- 5-1/2" FGB INSULATION
- 2 ROWS OF 2-1/2" MIN. 22 GA. STEEL STUDS @ 24" oc MAX. SPACED EVENLY
- 1 LAYER 5/8" FIRECODE GYP.

**NOTE:**

RSIC-1 CLIP & FURRING CHANNEL ADD 1-5/8" TO ASSEMBLY (DIST. FROM FACE OF FRAMING TO BACK OF GYP. BOARD)

**PROFILE**



**UL Fire Resistive Designs – 1 Hour - V496**



PAC International, Inc.  
 Phone: 866-774-2100 Web: www.pac-intl.com  
 © 2011 PAC International, Inc. • All Rights Reserved.  
 RSIC® is a registered Trademark of PAC International, Inc.

Last Revised:

4/23/2011

1 Hour Fire Rated Steel Wall Detail - UL V496  
 (See UL.com for additional detail)