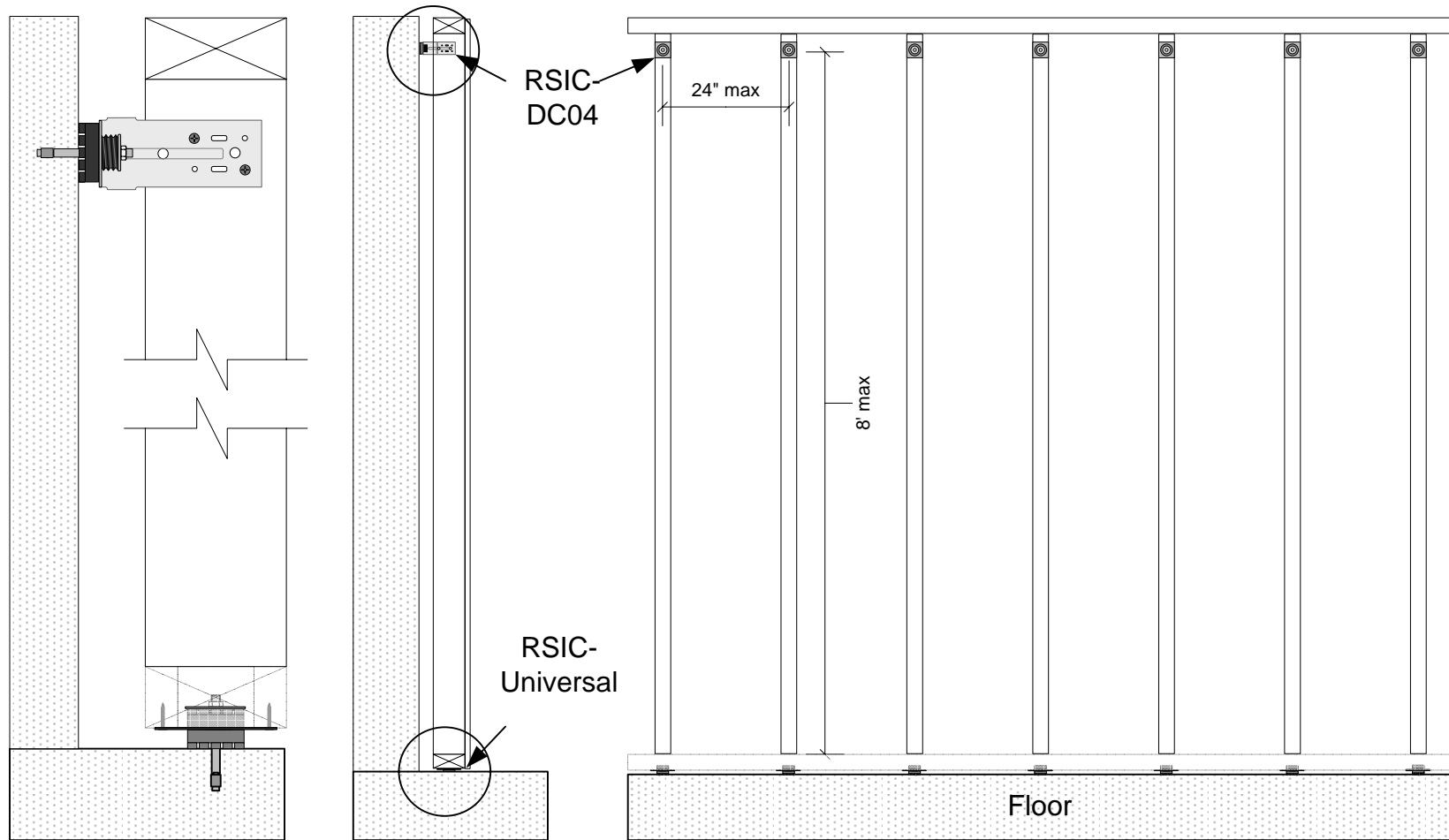


RSIC-DC04 Wall Isolation

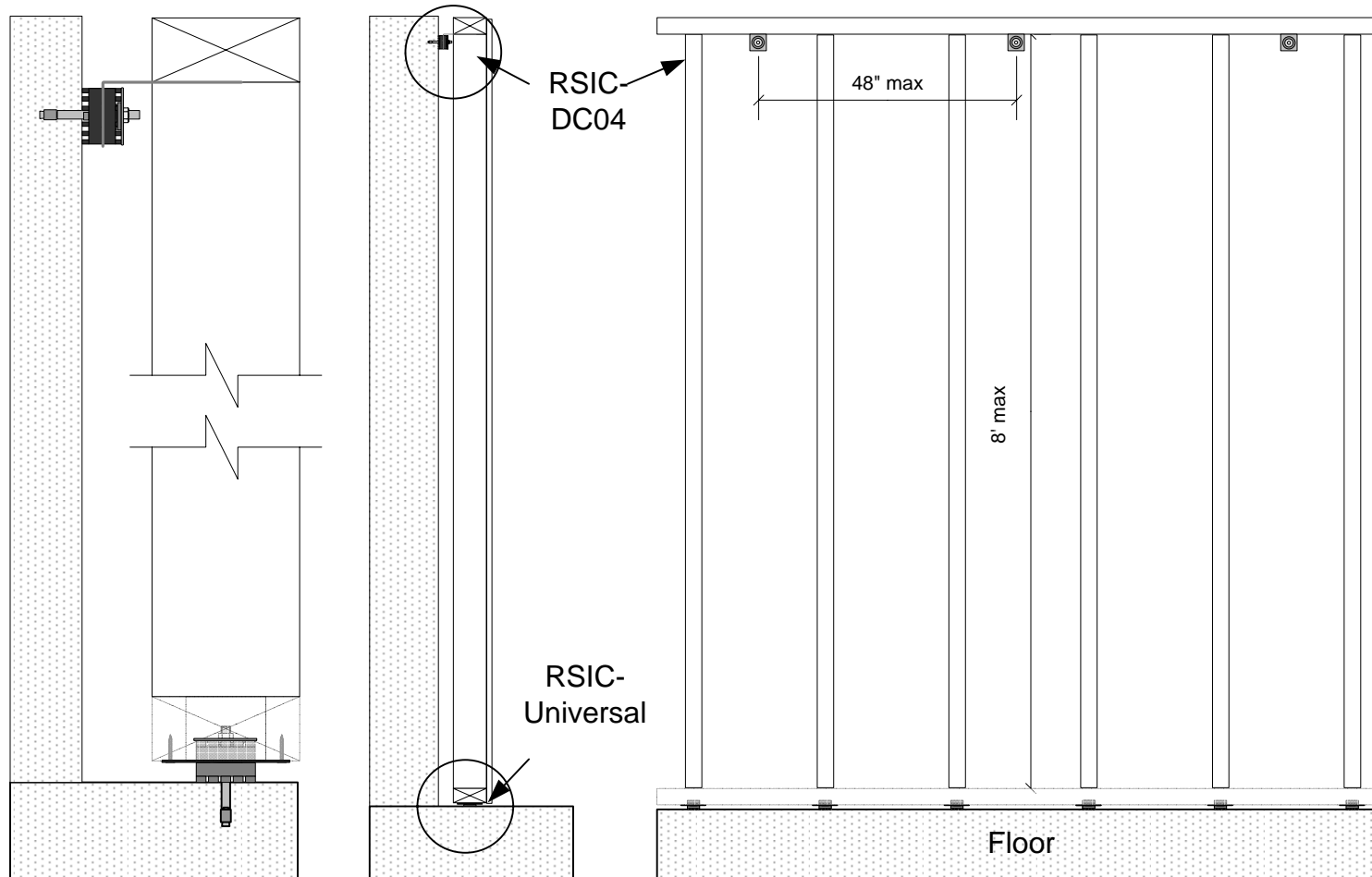
RSIC-DC04 Wood or Steel Wall Isolation



RSIC-DC04 Mounted to every vertical stud or top plate between ever stud. Max spacing 24" x 8' oc.

RSIC-DC04 HD/DD Wall Isolation

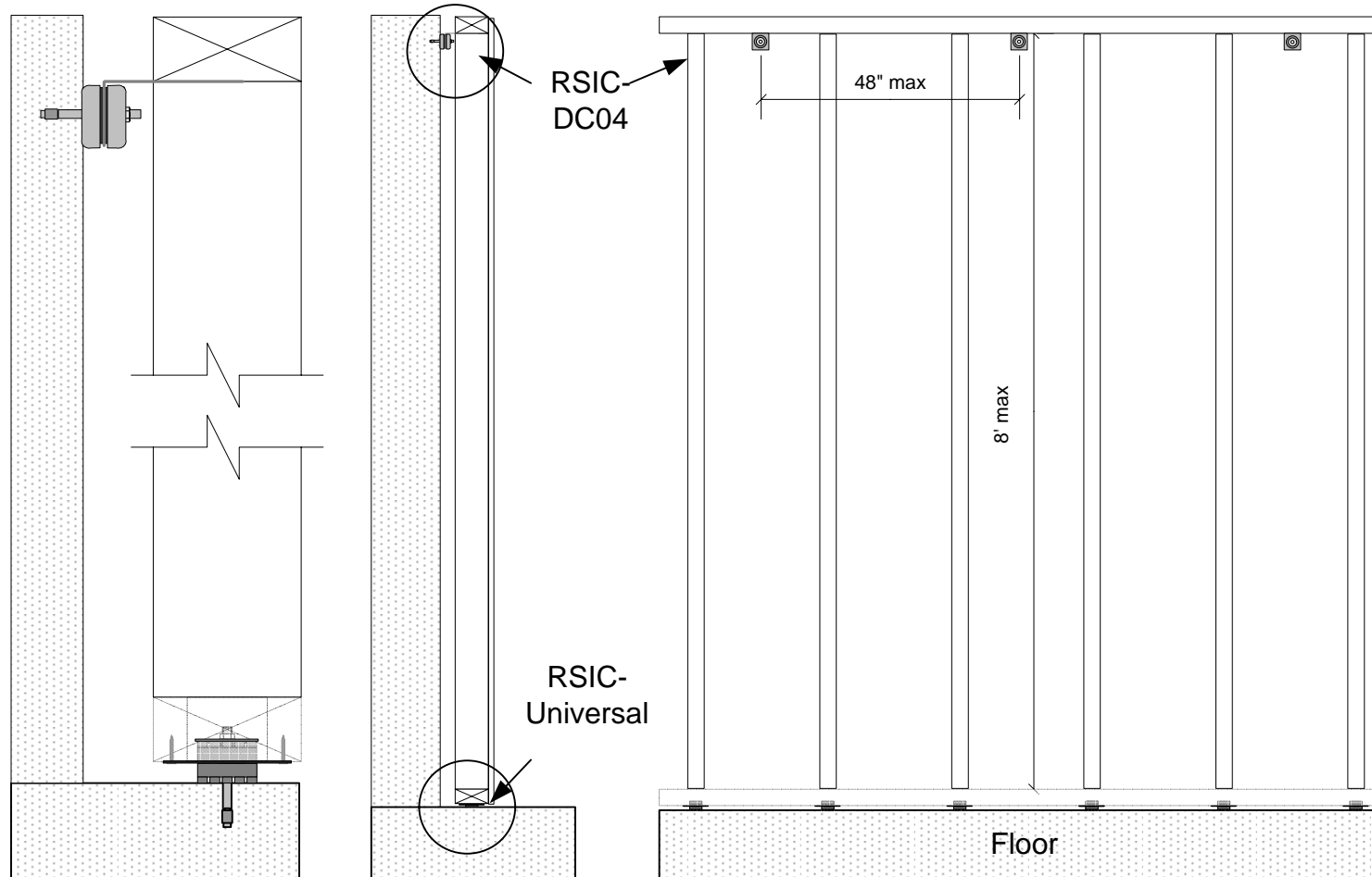
RSIC-DC04 HD/DD (Heavy Duty / Double Deflection)
Wood or Steel Wall Isolation



RSIC-DC04 HD/DD Mounted to the top plate. Max spacing 4' x 8' oc.

RSIC-DC04 HD/DD-DC Wall Isolation

RSIC-DC04 HD/DD-DC (Heavy Duty / Double Deflection with Deflection Control)
Wood or Steel Wall Isolation



RSIC-DC04 HD/DD Mounted to the top plate. Max spacing 4' x 8' oc.