

Design No. L567

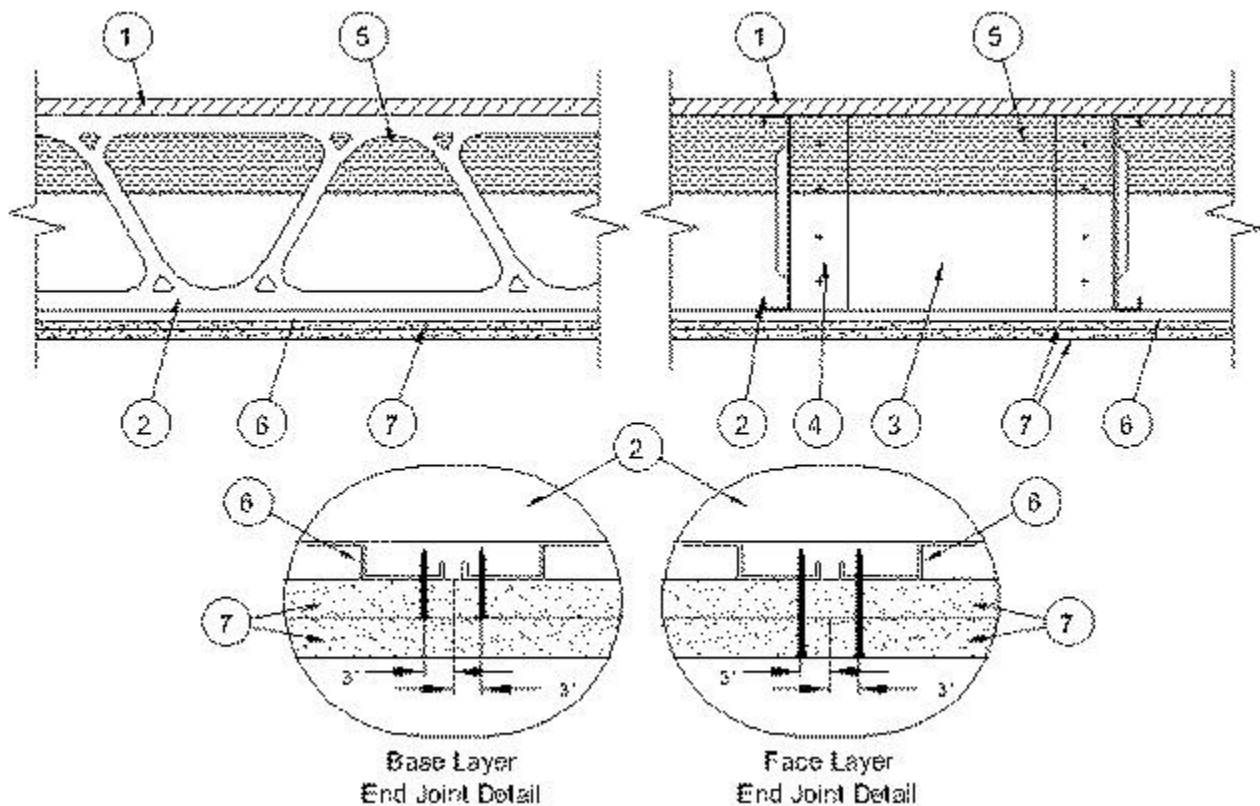
May 06, 2020

Unrestrained Assembly Ratings - 1 Hr

Load Restriction: 77% (See Item 2)

This design was evaluated using a load design method other than the Limit States Design Method (e.g., Working Stress Design Method). For jurisdictions employing the Limit States Design Method, such as Canada, a load restriction factor shall be used — See Guide [BXUV](#) or [BXUV7](#)

* Indicates such products shall bear the UL or cUL Certification Mark for jurisdictions employing the UL or cUL Certification (such as Canada), respectively.



1. **Flooring** — Min 3/4 in. (19 mm) thick T & G plywood, min grade "Underlayment". Face grain of plywood to be perpendicular to joists with joints staggered. Plywood secured to joists with polyurethane based construction adhesive along with 1-7/16 in. long No. 10 Phillips wafer head winged plywood screws spaced 12 in. OC in the field and 6 in. OC along edges of board. Screws located 5/8 in from end joints and 1 in from side joints of board. Adhesive applied on top of joists prior to placing plywood sheets.

In lieu of the wood sub-flooring described above, the following floor systems may be used:

System No. 1

Structural Cement-Fiber Units* — Structural cement-fiber units may be installed. Long dimension of panels to be perpendicular to joists with end joints staggered. Nominal 19 mm (3/4 in.) thick tongue and groove structural cement-fiber units fastened to the steel joists with #10 self drilling, self tapping cement board screws 1-3/4 in. long. Screws shall be spaced 6 in. OC along the perimeter of each sheet and 12 in. OC in the field of each sheet. Screws shall be spaced 1/2 in. from end joints and 1 in. from side joints.

System No. 2

Building Units* — Nom 3/4 in. thick, tongue and grooved boards. Long dimension of boards to be perpendicular to trusses with end joints staggered a min of 4 ft. and centered over the trusses. Boards secured to trusses with 1-1/4 in. long self-drilling, self-tapping screws spaced a max of 12 in. OC in the field with screws located 1 in. from long edge, and max 8 in. OC along the end joints with screws located 1/2 in. from end joint.

ECTEK INTERNATIONAL INC — Type MegaBoard

Optional Finish Flooring - Floor Topping Mixture* — Placed over the Structural Cement-Fiber Units, Item 1A. Min 3/4 in. thickness of floor topping mixture having a min compressive strength of 1000 psi. Mixture shall consist of 3 to 7 gal of water mixed with 80 lbs of floor topping mixture and 1.0 to 2.1 cu ft of sand.

MAXXON CORP — Types Maxxon Standard and Maxxon High Strength

Floor Mat Materials* — (Optional) — Floor mat material loose laid over the subfloor. Refer to manufacturer's instructions regarding minimum thickness of floor topping over each floor mat material, primers, and use of crack suppression reinforcement.

MAXXON CORP — Type Encapsulated Sound Mat

Floor Mat Reinforcement — (Optional) — Refer to manufacturer's instructions regarding minimum thickness of floor topping for use with floor mat reinforcement.

Metal Lath — (Optional) — 3/8 in. expanded galvanized steel diamond mesh, 3.4 lbs/sq yd loose laid over the floor mat material.

Fiber Glass Reinforcement — (Optional) - 0.015 in. thick PVC coated non-woven fiberglass mesh, 0.368 lbs./sq. yd loose laid over the floor mat material.

System No. 3

Sub-Flooring — Min 3/4 in. (19 mm) thick T & G plywood, min grade "Underlayment". Face grain of plywood to be perpendicular to joists with joints staggered. Plywood secured to joists with polyurethane based construction adhesive along with 1-7/16 in. long No. 10 Phillips wafer head winged plywood screws spaced 12 in. OC in the field and 6 in. OC along edges of board. Screws located 5/8 in from end joints and 1 in from side joints of board. Adhesive applied on top of joists prior to placing plywood sheets.

Vapor Barrier — (Optional) - Commercial asphalt saturated felt, 0.030 in. thick.

Vapor Barrier — (Optional) - Nom 0.010 in. thick commercial rosin-sized building paper.

Finish Flooring - Floor Topping Mixture* — Min 3/4 in. thickness of any Floor Topping Mixture bearing the UL Classification Marking as to Fire Resistance. See Floor- and Roof-Topping Mixtures (CCOX) category for names of Classified Companies.

Floor Mat Materials* — (Optional, Not Shown) - Floor mat material loose laid over the subfloor. Refer to manufacturer's instructions regarding the minimum thickness of floor topping over each floor mat material.

LOW & BONAR INC — EnkaSonic® by Colbond a member of the Low & Bonar group Types 125, 250, 250 Plus, 400, 400 Plus, 750 and 750 Plus.

Floor Mat Reinforcement — (Optional) - Refer to manufacturer's instructions regarding minimum thickness of floor topping for use with floor mat reinforcement.

Metal Lath — (Optional) — Expanded steel diamond mesh, 2.5 lb / sq yd loose laid over floor mat material.

Fiberglass Mesh Reinforcement — (Optional) — Coated non-woven glass fiber mesh grid loose laid over floor mat material.

2. **Structural Steel Members*** — The proprietary joists are channel-shaped, min 10 in. deep with min 2 in. wide flanges and 3/4 in. long stiffening flanges. The joists are fabricated from min 16 MSG galv steel. Joists spaced max 16 in. OC. Floor joists attached to rim joist using channel-shaped web stiffeners. **Allowable loading must be calculated so as to stress the steel studs to a maximum of 77% of the stress calculated in accordance with the allowable stress design approach outlined in the manufacturer's load tables.**

MARINO/WARE, DIV OF WARE INDUSTRIES INC — Type JR JoistRite floor joists, Type JT Joist Track

3. **Blocking & Bridging** — Installed immediately after joists are erected and before construction loads are applied. The blocking consists of cut to length solid joist sections placed between joists spaced max 10 ft-0 in. OC perpendicular to the joists and max 7 ft-0 in. OC along the joist length. In addition, bridging consists of 1-1/2 in. cold-rolled channel, min No. 16 ga, attached to the bottom of the joist and along the blocking. Attach to each blocking piece with four 5/8 in. long No. 10 x 16 low profile steel screws.

4. **Angle Clips** — Min No. 16 MSG, with length to be equal to joist depth with min 3 in. long legs. Angle clips secured to blocking and joists with four 5/8 in. long No. 10 x 16 low profile steel screws.

5. **Mineral and Fiber Board*** — Nom 4 in. thickness of mineral wool insulation friction-fit to underside of plywood between structural steel members. Any mineral wool or glass fiber insulation bearing the UL Classification Marking for Surface Burning Characteristics having a flame spread index of 25 or less, a smoke developed index of 50 or less and a min density of 4.5 lb/cu ft may be used.

See **Mineral and Fiber Board** (BQXR) category in the Building Materials Directory for names of manufacturers

6. **Resilient Channels** — Resilient channels, formed of No. 25 MSG galv steel, 1/2 in. deep, spaced max 16 in. OC perpendicular to joists. Channels secured to each joist with one 5/8 in. long No. 10 x16 low profile steel screw. Two additional rows of channels, spaced 3-1/2 in. OC, oriented opposite each gypsum board end joint as shown in end joint detail.

6A. **Steel Framing Members*** — (Optional, Not Shown) — As an alternate to Item 6.

a. **Furring Channels** — Formed of No. 25 MSG galv steel, nominal 2-1/2 in. wide by 7/8 in. deep, spaced 16 in. OC, perpendicular to joists. Channels secured to Cold Rolled Channels at every intersection with a 3/4 in. TEK screw through each furring channel leg. Ends of adjoining channels overlapped 12 in. and fastened together with two double strand No. 18 SWG galv steel wire ties, one at each end of overlap, or with two 3/4 in. TEK screws in each leg of the overlap section. Two furring channels used at end joints of gypsum board (Item 7), each extending a min of 6 in. beyond both side edges of the board.

b. **Cold Rolled Channels** — 1-1/2 in. by 1/2 in., formed from No. 16 ga. galv steel, positioned vertically and parallel to joists, friction-fitted into the channel caddy on the Steel Framing Members (Item 6Ac) and secured with two 3/4 in. TEK screws. Adjoining lengths of cold rolled channels lapped min. 12 in. and secured along bottom legs with four 3/4 in. TEK screws and wire-tied together with two double strand 18 SWG galv steel wire ties, one at each end of overlap.

c. **Steel Framing Members*** — Spaced 48 in. OC. max along joist, and secured to the joist on alternating joists with two, No. 10-16 TEK screws through mounting holes on the hanger bracket.

d. **Blocking** — Where joist design does not permit direct, full contact of the hanger bracket, a piece of nominal 3-5/8" x 20 ga. steel stud (blocking), min. 12 in. long to permit full contact of the hanger bracket, to be secured vertically to the side of the joist at the top and bottom of the blocking at each Steel Framing Member (Item 6Ac) location minimum 2-1/2 in. screws.

PAC INTERNATIONAL L L C — Type RSIC-SI-CRC EZ Clip

6B. **Steel Framing Members*** — (Optional, Not Shown) — As an alternate to Item 6.

a. **Furring Channels** — Formed of No. 25 MSG galv steel, nominal 2-1/2 in. wide by 7/8 in. deep, spaced 16 in. OC perpendicular to joists and friction fit into Steel Framing Members (Item 6Bb). Ends of adjoining channels overlapped 6 in. and tied together with double strand of No. 18 SWG galv steel wire near each end of overlap or with two TEK screws along each leg of the 6 in. overlap. Two furring channels used at end joints of gypsum board (Item 7). Butt joint channels held in place by strong back channels placed upside down, on top of, and running perpendicular to primary furring channels, extending 6 in. longer than length of gypsum side joint. Strong back channels spaced maximum 48 in. OC. Strong back channels secured to every intersection of primary furring channels with four 7/16 in. pan head screws, two along each of the legs at intersections. Butt joint channels run perpendicular to strong back channels and shall be minimum 6 in. longer than length of joint, secured to strong back channels with 7/16 in. pan head screws, two along each of the legs at intersection with strong back channels.

b. **Steel Framing Members*** — Used to attach furring channels (Item 6Ba) to joists. Clips spaced 48 in. OC and secured along joist webs at each furring channel intersection with min. 3/4 in. long self-drilling No. 10-16 TEK screws through each of the provided hole locations. Furring channels are friction fitted into clips.

c. **Blocking** — Where truss design does not permit direct, full contact of the hanger bracket, a piece of nominal 3-5/8" x 20 ga. steel stud (blocking), min. 12 in. long to permit full contact of the hanger bracket, to be secured vertically to the side of the trusses at the top and bottom of the blocking at each Steel Framing Member (Item 6Bb) location with 16d nails or minimum 2-1/2 in. screws.

PAC INTERNATIONAL L L C — Type RSIC-S1-1 Ultra

6C. **Steel Framing Members*** — (Optional, Not Shown) — As an alternate to Item 6.

a. **Furring Channels** — Formed of No. 25 MSG galv steel. 2-9/16 in. wide by 7/8 in. deep, spaced 16 in. OC, perpendicular to joists. Channels secured to joists as described in Item b. Ends of adjoining channels overlapped 6 in. and tied together with double strand of No. 18 SWG galv steel wire near each end of overlap.

b. **Steel Framing Members*** — Used to attach furring channels (Item a) to the steel joists (Item 2). Clips spaced a max of 48 in. OC. RSIC-1 clips secured to joists with No. 8 x 1-5/8 in. fine thread screw through the center grommet. Furring channels are friction fitted into clips. RSIC-1 clips for use with 2-9/16 in. wide furring channels. Adjoining channels are overlapped as described in Item a. As an alternate, ends of adjoining channels may be overlapped 6 in. and secured together with two self-tapping No. 6 framing screws, min. 7/16 in. long at the midpoint of the overlap, with one screw on each flange of the channel.

PAC INTERNATIONAL L L C — Type RSIC-1

7. **Gypsum Board*** — Two layers of 1/2 in. thick by 48 in. wide gypsum board installed with long dimension perpendicular to resilient channels. Base layer secured to resilient channel using 1 in. long Type S bugle head steel screws spaced 16 in. OC in the field and 6 in. OC along the end joints of the board. Screws located 1/2 in. from end joints and 1 in. from long edges. End joints secured to both resilient channels as shown in end joint detail. Face layer attached to resilient channels through upper layer with 1-1/4 in. long Type S bugle head steel screws spaced a max 16 in. OC in the field and 6 in. OC along the end joints of the board. Screws located 1/2 in. from end joint and 1 in. from the long edges. End joints secured to both resilient channels as shown in end joint detail. All joints in face layer boards to be offset from joints in base layer by min 16 in.

When **Steel Framing Members** (Item 6A) are used, Two layers nom 1/2 in. thick, 4 ft wide gypsum board, installed as described in Item 7. Adjacent butt joints staggered minimum 48 in. OC.

When **Steel Framing Members** (Item 6B) are used, Two layers nom 1/2 in. thick, 4 ft wide gypsum board, installed as described in Item 7. Butt joints staggered minimum 24 in. OC.

When **Steel Framing Members** (Item 6C) are used, base layer gypsum panels installed with long dimensions perpendicular to furring channels. Panels attached to the furring channels using 1 in. long Type S bugle-head steel screws spaced 8 in. OC along butted end joints and in the field of the panel. Butted end joints shall be staggered min. 2 ft within the assembly, and occur midway between the continuous furring channels. Each end of each gypsum panel shall be supported by a single length of furring channel equal to the width of the gypsum panel plus 6 in. on each end. The two support furring channels shall be spaced approximately 3-1/2 in. OC, and be attached with one clip at each end of the channel. Outer layer attached as described in Item 7.

CGC INC — Type C

UNITED STATES GYPSUM CO — Type C

8. **Finishing System - (Not Shown)** — Vinyl, dry or premixed joint compound, applied in two coats to joints and screw-heads. Nom 2 in. wide paper tape embedded in first layer of compound over all joints. As an alternate, nom 3/32 in. thick veneer plaster may be applied to the entire surface of gypsum board.

*** Indicates such products shall bear the UL or cUL Certification Mark for jurisdictions employing the UL or cUL Certification (such as Canada), respectively.**

[Last Updated](#) on 2020-05-06